

New



Let Our Excellence
Be Yours

Pompe sommerse 6" - 8"
serie BHE

Submersible pumps 6" - 8"
series BHE

Pompe Sommerse Serie BHE in Acciaio Inossidabile Per pozzi profondi 6" e superiori

Tre modelli a flusso radiale per alte prevalenze e medie portate, due modelli a flusso semiassiale per medie prevalenze ed alte portate.

APPLICAZIONI

- Approvvigionamento idrico da pozzi profondi
- Distribuzione idrica e pressurizzazione
- Impianti di irrigazione, trattamento acque, filtraggio e osmosi inversa
- Sistemi industriali di raffreddamento
- Miniere
- Fontane
- Impianti antincendio

CARATTERISTICHE

- Struttura completamente in acciaio inossidabile per assicurare resistenza alla corrosione e durata nel tempo oltre che un perfetto allineamento di tutti i componenti
- Giranti e diffusori realizzati in acciaio inossidabile per garantire ottimi rendimenti ed elevate prestazioni
- Anello di rasamento in Teflon, supporto di guida albero in ceramica e cuscinetto autolubrificato in gomma nitrilica assicurano la resistenza all'usura per prestazioni costanti e affidabilità del prodotto
- Valvola di ritegno integrata nella testata di acciaio microfusa, capace di scaricare eventuali colpi d'ariete sulla testata stessa salvaguardando il pacco idraulico
- Pompa compatta, e adatta anche al funzionamento in posizione orizzontale
- Il progetto idraulico esalta il rendimento riducendo così i costi energetici per una massima economicità di esercizio

DATI CARATTERISTICI

- Portate fino a 70 m³/h
- Prevalenze fino a 500 m
- Massima quantità di sabbia tollerata nell'acqua: 50 gr/m³
- Campo di temperatura del liquido pompato: da 0°C a +50°C
- Rotazione antioraria rispetto al corpo di mandata
- Funzionamento continuo in posizione verticale oppure orizzontale
- Giunto e flangia di accoppiamento motore a norme NEMA

SOLUZIONI DISPONIBILI SU RICHIESTA

- Versione L in acciaio inossidabile AISI 316 (DIN/EN 1.4401)
- Doppio copricavo per motori con avviamento a stella/triangolo
- Corpo di mandata da 2" e 3" Rp per modelli BHE 14 e BHE 19
- Corpo di mandata da 4" Rp per tutti i modelli
- Supporto motore per accoppiamento a motori da 4 pollici
- Versione per alte temperature (fino a 90°C)

BHE Stainless Steel Submersible Turbine Pumps for 6" and larger deep wells

The improved mechanical design combined with the use of an advanced stainless steel manufacturing technology results in a state-of-the-art 6" submersible pumps series.

APPLICATIONS

- Water feeding from deep wells
- Sprinkling and flow irrigation systems
- Fire-fighting systems
- Mining applications
- Other various industrial applications

FEATURES

- Easy to install and service, thanks to the simple hydraulic design (all parts are easily dismantled if field service is necessary, thus minimizing the system down-time)
- Fluted Ceramic/Nitrile bearings and floating PTFE neck rings allow excellent abrasives handling and wear resistance
- Check valve assembly incorporated into discharge head

SPECIFICATIONS

- Capacities up to 70 m³/h
- Heads up to 500 m
- Maximum allowable amount of sand 50 gr/m³ (of the same hardness and granulometry of silt)
- Water temperature range: from 0°C to 50°C
- Rotation: counter clockwise when looking into discharge
- Coupling with NEMA standard motors
- Pump can work continuously both vertically or horizontally

AVAILABLE ON REQUEST

- AISI 316 stainless steel version (DIN/EN 1.4401)
- Double cable guard
- BHE 14 and 19 types with Rp 2" and 3" discharge head
- Rp 4" discharge head
- 4" motor adapter

CODICE IDENTIFICATIVO PUMP IDENTIFICATION CODE



No. di giranti
No. of impellers

m³/h al massimo rendimento
m³/h at max. efficiency

Indicazione per la versione in AISI 316
Indication for AISI 316 version only

Serie modelli
Models series

Indicazione per l'attacco a motore 4"
Indication for 4" motor only

Dimensione minima dei pozzi: 6"
6" Dimension of deep wells



6 BHE

DESCRIZIONE PARTI PART DESCRIPTION	TIPO TYPE	MATERIALI MATERIAL			
		Versione Standard Standard version		Versione L L version	
		AISI	DIN/EN	AISI	DIN/EN
Supporto motore <i>Outer case with motor adapter</i>	Stainless steel	316	1.4404	316	1.4404
Raccordo di mandata con valvola di non ritorno OR di tenuta <i>Discharge head with built-in check valve sealing O-ring</i>	Stainless steel	316	1.4404	316	1.4404
Cilindro supporto con: <i>Upper bowl with:</i>	Stainless steel	316	1.4404	316	1.4404
bussola superiore <i>upper bearing bush</i>	Nitrile rubber (NBR)				
cuscinetto superiore <i>upper journal sleeve</i>	Stainless steel w/ ceramic coating	329	1.4460	329	1.4460
Albero <i>Pump shaft</i>	Stainless steel	316	1.4401	316	1.4401
Diffusore con: <i>Diffuser with:</i>	Stainless steel	304	1.4301	316L	1.4404
anello di rasamento <i>floating neck ring</i>	Teflon (PTFE)				
bussola intermedia <i>secondary bearing bush</i>	Nitrile rubber (NBR)				
cuscinetto intermedio <i>secondary journal sleeve</i>	Stainless steel	304	1.4301	316	1.4401
Girante <i>Impeller</i>	Stainless steel	304	1.4301	316	1.4404
Copricavo <i>Cable guard</i>	Stainless steel	316	1.4401	316	1.4401
Filtro in aspirazione <i>Suction strainer</i>	Stainless steel	316	1.4401	316	1.4401
Bloccaggio supporto <i>Insert locking outer case</i>	Stainless steel	316	1.4401	316	1.4401
Rondella reggispinta <i>Up-thrust washer</i>	Stainless steel	316	1.4401	316	1.4401
Reggispinta <i>Up-thrust disc</i>	Teflon (PTFE)				
Viti e rondelle <i>Screw and washer</i>	Stainless steel	316	1.4401	316	1.4401

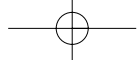


Stadio radiale
Radial flow stage



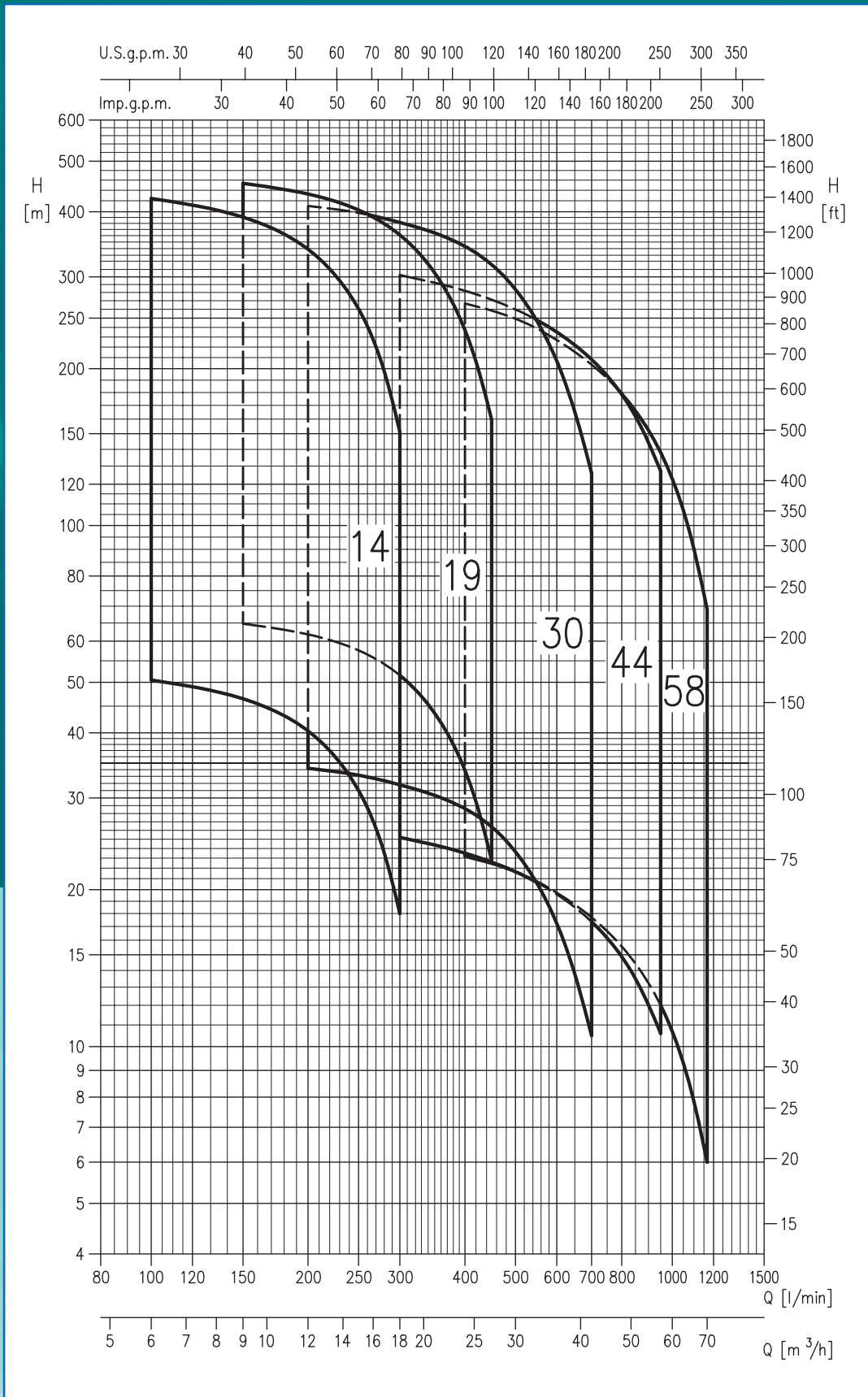
Stadio semiassiale
Mixed flow stage



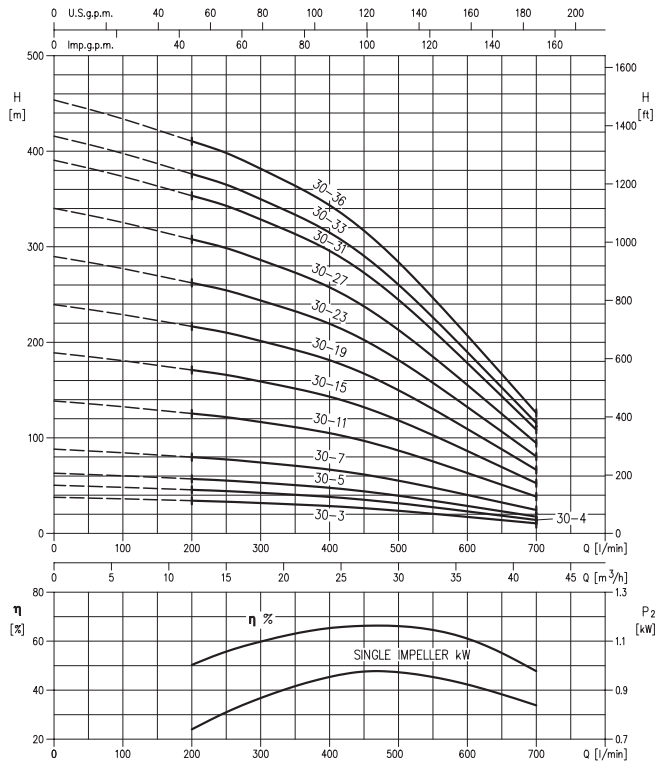


Curva di reseau Reseau curves

6 BHE



6 BHE 30



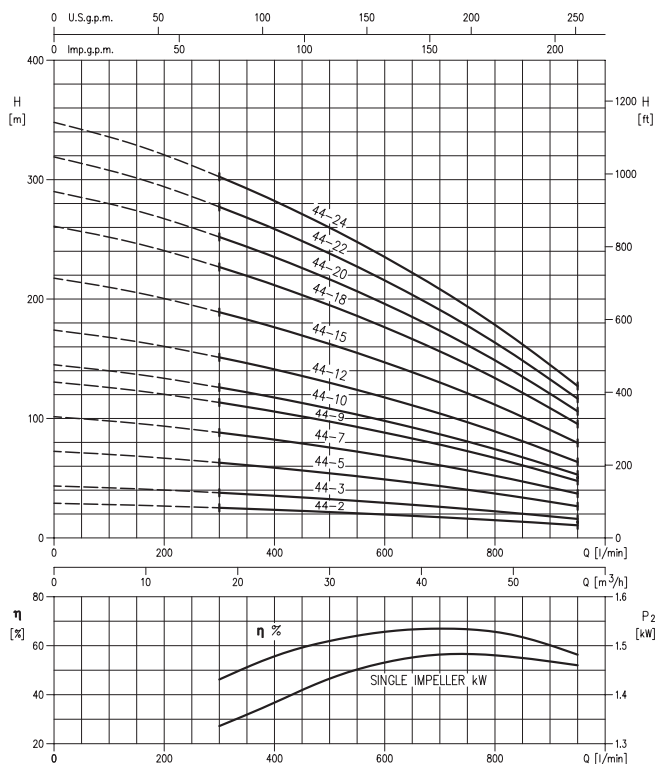
LEGGENDA SIMBOLI:

- Q = portata
- H = prevalenza
- P2 = potenza assorbita pompa
- η = rendimento pompa
- Tolleranza delle curve secondo ISO 9906 Allegato A

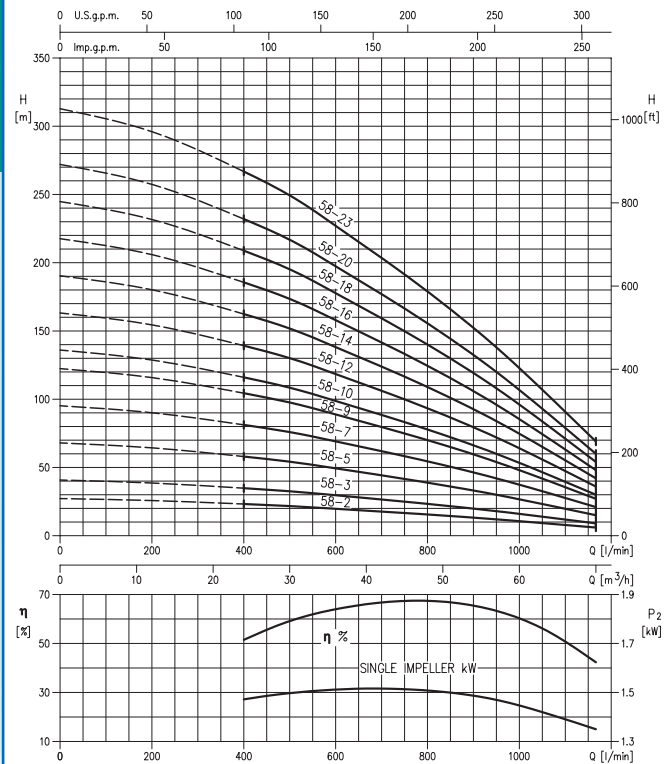
SYMBOLS EXPLANATION:

- Q = volume flow rate
- H = total head
- P2 = pump power input (shaft power)
- η = pump efficiency
- Tolerances according to ISO 9906 Annex A

6 BHE 44



6 BHE 58



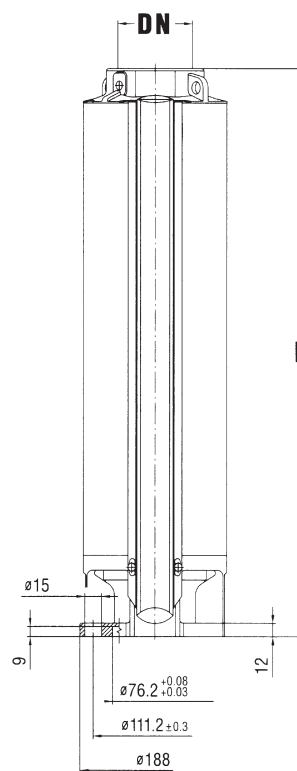
Tablelle Prestazioni a ~ 2850 rpm Performances tables at ~ 2850 rpm

6 BHE

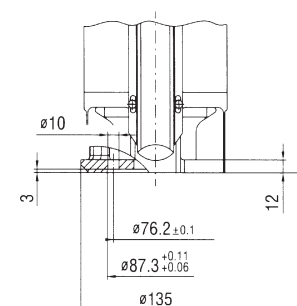
Modello pompa Pump type	Grandezza Size	Motore Motor		Dimensioni Dimensions		Peso Weight KG
		Potenza- kW	Power HP	(mm)	L DN	
64 BHE 14 - 5	4"	2,2	3	356	Rp 2"1/2	10,5
64 BHE 14 - 8	4"	4	5,5	446	Rp 2"1/2	13
6 BHE 14 - 8	6"	4	5,5	446	Rp 2"1/2	13
64 BHE 14 - 13	4"	5,5	7,5	596	Rp 2"1/2	16,5
6 BHE 14 - 13	6"	5,5	7,5	596	Rp 2"1/2	16,5
6 BHE 14 - 17	6"	7,5	10	716	Rp 2"1/2	19,5
6 BHE 14 - 22	6"	9,2	12,5	866	Rp 2"1/2	23
6 BHE 14 - 26	6"	11	15	986	Rp 2"1/2	26
6 BHE 14 - 32	6"	15	20	1166	Rp 2"1/2	30,5
6 BHE 14 - 36	6"	15	20	1286	Rp 2"1/2	33,5
6 BHE 14 - 42	6"	18,5	25	1466	Rp 2"1/2	38
64 BHE 19 - 6	4"	4	5,5	431	Rp 2"1/2	12,0
6 BHE 19 - 6	6"	4	5,5	431	Rp 2"1/2	12,0
64 BHE 19 - 9	4"	5,5	7,5	543,5	Rp 2"1/2	14,5
6 BHE 19 - 9	6"	5,5	7,5	543,5	Rp 2"1/2	14,5
6 BHE 19 - 12	6"	7,5	10	656	Rp 2"1/2	16,5
6 BHE 19 - 15	6"	9,2	12,5	768,5	Rp 2"1/2	19,0
6 BHE 19 - 18	6"	11	15	881	Rp 2"1/2	21,5
6 BHE 19 - 21	6"	15	20	993,5	Rp 2"1/2	24,0
6 BHE 19 - 24	6"	15	20	1106	Rp 2"1/2	26,5
6 BHE 19 - 28	6"	18,5	25	1256	Rp 2"1/2	30,0
6 BHE 19 - 30	6"	18,5	25	1331	Rp 2"1/2	31,5
6 BHE 19 - 33	6"	22	30	1443,5	Rp 2"1/2	34,0
6 BHE 19 - 36	6"	22	30	1556	Rp 2"1/2	36,5
6 BHE 19 - 39	6"	30	40	1668	Rp 2"1/2	39,0
6 BHE 19 - 42	6"	30	40	1853	Rp 2"1/2	42,0
64 BHE 30 - 3	4"	3	4	365,5	Rp 3"	10,5
64 BHE 30 - 4	4"	4	5,5	412	Rp 3"	11,5
6 BHE 30 - 4	6"	4	5,5	412	Rp 3"	11,5
64 BHE 30 - 5	4"	5,5	7,5	458,5	Rp 3"	12,5
6 BHE 30 - 5	6"	5,5	7,5	458,5	Rp 3"	12,5
6 BHE 30 - 7	6"	7,5	10	551,5	Rp 3"	14,5
6 BHE 30 - 11	6"	11	15	737,5	Rp 3"	18,5
6 BHE 30 - 15	6"	15	20	923,5	Rp 3"	22,5
6 BHE 30 - 19	6"	18,5	25	1109,5	Rp 3"	26,0
6 BHE 30 - 23	6"	22	30	1295,5	Rp 3"	30,0
6 BHE 30 - 27	6"	30	40	1481,5	Rp 3"	34,0
6 BHE 30 - 31	6"	30	40	1667,5	Rp 3"	38,0
6 BHE 30 - 33	6"	37	50	1760	Rp 3"	40,0
6 BHE 30 - 36	6"	37	50	1899,5	Rp 3"	43,0
64 BHE 44 - 2	4"	3	4	365,5	Rp 3"	11,0
64 BHE 44 - 3	4"	4	5,5	458,5	Rp 3"	13,5
6 BHE 44 - 3	6"	4	5,5	458,5	Rp 3"	13,5
64 BHE 44 - 5	4"	5,5	7,5	644,5	Rp 3"	18,0
6 BHE 44 - 5	6"	5,5	7,5	644,5	Rp 3"	18,0
6 BHE 44 - 7	6"	7,5	10	830,5	Rp 3"	22,5
6 BHE 44 - 9	6"	11	15	1016,5	Rp 3"	27,0
6 BHE 44 - 10	6"	15	20	1109,5	Rp 3"	29,5
6 BHE 44 - 12	6"	18,5	25	1295,5	Rp 3"	34,0
6 BHE 44 - 15	6"	22	30	1574,5	Rp 3"	40,5
6 BHE 44 - 18	6"	30	40	1853,5	Rp 3"	47,5
6 BHE 44 - 20	6"	30	40	2039,5	Rp 3"	52,0
6 BHE 44 - 22	6"	37	50	2225,5	Rp 3"	56,5
6 BHE 44 - 24	6"	37	50	2411	Rp 3"	61,0
64 BHE 58 - 2	4"	3	4	365,5	Rp 3"	11,5
64 BHE 58 - 3	4"	5,5	7,5	458,5	Rp 3"	13,5
6 BHE 58 - 3	6"	5,5	7,5	458,5	Rp 3"	13,5
6 BHE 58 - 5	6"	7,5	10	644,5	Rp 3"	18,0
6 BHE 58 - 7	6"	11	15	830,5	Rp 3"	23,0
6 BHE 58 - 9	6"	15	20	1016,5	Rp 3"	27,5
6 BHE 58 - 10	6"	15	20	1109,5	Rp 3"	30,0
6 BHE 58 - 12	6"	18,5	25	1295,5	Rp 3"	34,5
6 BHE 58 - 14	6"	22	30	1481,5	Rp 3"	39,0
6 BHE 58 - 16	6"	30	40	1667,5	Rp 3"	44,0
6 BHE 58 - 18	6"	30	40	1853,5	Rp 3"	48,5
6 BHE 58 - 20	6"	37	50	2040	Rp 3"	52,0
6 BHE 58 - 23	6"	37	50	2318	Rp 3"	60,0

Dimensioni Dimensions

Adattatore per 6" 6" Motor adapter



Adattatore per 4" 4" Motor adapter



	Diametro con 1 copricavo Diameter with 1 cable cover	Diametro con 2 copricavo Diameter with 2 cable cover	Diametro esterno motore External motor diameter
Pompa 6" Pump 6"	141	145	-
Pompa 6" con motore 4" Pump 6" with motor 4"	141	-	95.25
Pompa 6" con motore 6" Pump 6" with motor 6"	144	146.5	136.5

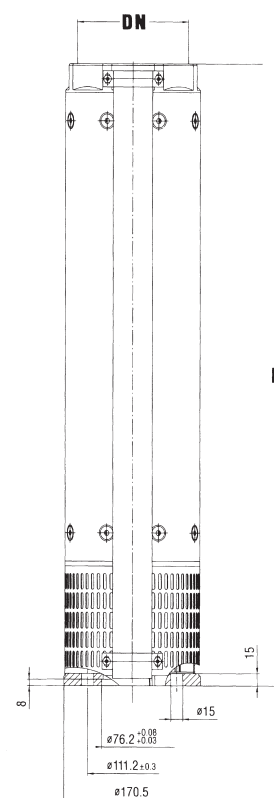
Tablelle Prestazioni a ~ 2900 rpm Performances tables at ~ 2900 rpm

8 BHE

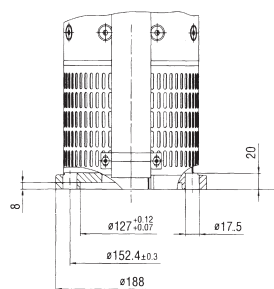
Modello pompa Pump type	Grandezza Size	Motore Motor		Dimensioni Dimensions		Peso Weight KG
		Potenza- kW	Power HP	(mm)	L DN	
86 BHE 77 - 2	6"	7,5	10	644	Rp 5"	31,5
86 BHE 77 - 3	6"	11	15	770	Rp 5"	36,5
86 BHE 77 - 4	6"	15	20	896	Rp 5"	41,5
86 BHE 77 - 5	6"	18,5	25	1022	Rp 5"	46,5
86 BHE 77 - 6	6"	22	30	1148	Rp 5"	51,0
86 BHE 77 - 7	6"	30	40	1274	Rp 5"	56,0
86 BHE 77 - 8	6"	30	40	1400	Rp 5"	61,0
86 BHE 77 - 9	6"	30	40	1526	Rp 5"	66,0
86 BHE 77 - 10	6"	37	50	1652	Rp 5"	71,0
86 BHE 77 - 11	6"	37	50	1778	Rp 5"	76,0
8 BHE 77 - 12	8"	45	60	1909	Rp 5"	82,0
8 BHE 77 - 13	8"	55	75	2035	Rp 5"	87,0
8 BHE 77 - 14	8"	55	75	2161	Rp 5"	92,0
8 BHE 77 - 15	8"	55	75	2287	Rp 5"	97,0
8 BHE 77 - 16	8"	75	100	2413	Rp 5"	101,5
8 BHE 77 - 17	8"	75	100	2539	Rp 5"	106,5
8 BHE 77 - 18	8"	75	100	2665	Rp 5"	111,5
8 BHE 77 - 19	8"	75	100	2791	Rp 5"	116,5
8 BHE 77 - 20	8"	75	100	2917	Rp 5"	121,0
8 BHE 77 - 21	8"	75	100	3043	Rp 5"	126,0
8 BHE 77 - 22	8"	93	125	3169	Rp 5"	131,0
8 BHE 77 - 23	8"	93	125	3295	Rp 5"	136,0
8 BHE 77 - 24	8"	93	125	3421	Rp 5"	141,0
86 BHE 95 - 2	6"	9,2	12,5	644	Rp 5"	31,5
86 BHE 95 - 3	6"	15	20	770	Rp 5"	36,5
86 BHE 95 - 4	6"	18,5	25	896	Rp 5"	41,5
86 BHE 95 - 5	6"	22	30	1022	Rp 5"	46,0
86 BHE 95 - 6	6"	30	40	1148	Rp 5"	51,0
86 BHE 95 - 7	6"	30	40	1274	Rp 5"	56,0
86 BHE 95 - 8	6"	37	50	1400	Rp 5"	61,0
86 BHE 95 - 9	6"	37	50	1526	Rp 5"	66,0
8 BHE 95 - 10	8"	45	60	1657	Rp 5"	72,0
8 BHE 95 - 11	8"	55	75	1783	Rp 5"	77,0
8 BHE 95 - 12	8"	55	75	1909	Rp 5"	82,0
8 BHE 95 - 13	8"	55	75	2035	Rp 5"	87,0
8 BHE 95 - 14	8"	75	100	2161	Rp 5"	92,0
8 BHE 95 - 15	8"	75	100	2287	Rp 5"	97,0
8 BHE 95 - 16	8"	75	100	2413	Rp 5"	102,0
8 BHE 95 - 17	8"	75	100	2539	Rp 5"	106,5
8 BHE 95 - 18	8"	93	125	2665	Rp 5"	111,5
8 BHE 95 - 19	8"	93	125	2791	Rp 5"	116,5
8 BHE 95 - 20	8"	93	125	2917	Rp 5"	121,0
8 BHE 95 - 21	8"	93	125	3043	Rp 5"	126,0
8 BHE 95 - 22	8"	110	150	3169	Rp 5"	131,0
8 BHE 95 - 23	8"	110	150	3295	Rp 5"	136,0

Dimensioni Dimensions

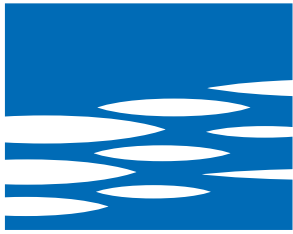
Adattatore per 6" 6" Motor adapter



Adattatore per 8" 8" Motor adapter



	Diametro con 1 copricavo Diameter with 1 cable cover	Diametro con 2 copricavo Diameter with 2 cable cover	Diametro esterno motore External motor diameter
Pompa 8" Pump 8"	186.5	192	-
Pompa 8" con motore 6" Pump 8" with motor 6"	186.5	192	136.5
Pompa 8" con motore 8" Pump 8" with motor 8"	195	197.5	187.5



EBARA

479705371 08/05



www.ebaraeurope.com

**Let Our Excellence
Be Yours**

EBARA PUMPS EUROPE S.p.A.
Via Pacinotti, 32
36040 BRENDA (VICENZA), Italy
Phone +39 0444 706811
Fax +39 0444 706950
www.ebaraeurope.com
marketing@ebaraeurope.com

EBARA PUMPS UK LIMITED
Unit 7- Zodiac Business Park
High Road - Cowley Uxbridge
Middlesex UB8 2 GU,
United Kingdom
Phone: +44 1895 439027
Fax: +44 1895 439028

EBARA ESPAÑA BOMBAS S.A.
Polígono Las Arenas, C/Alameda, 1
28320 Pinto (Madrid), Spain
Phone: +34 916.953.630
Fax: +34 916.923.891

EBARA FRANCE
Maille Nord 2
8, Avenue Montaigne
93160 Noisy Le Grand, France
Phone: +33 (0) 155851616
Fax: +33 (0) 155851639

EBARA PUMPEN
Philipp-Reis - Str. 15
6312 DIETZENBACH, Germany
Phone: +49 6074/82790
Fax: +49 6074/827942

EBARA pompy polska Sp z o.o.
ul. Minska 63
03-828 Warszawa, Poland
Phone: +48 22 3308118
Fax: +48 22 3308119